

Class 600 • Bolted Cap

Material of Construction

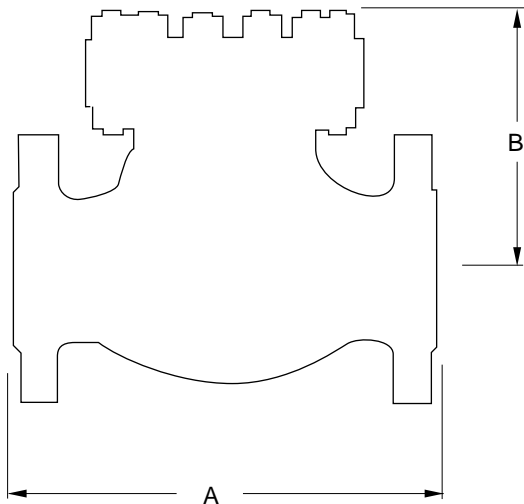
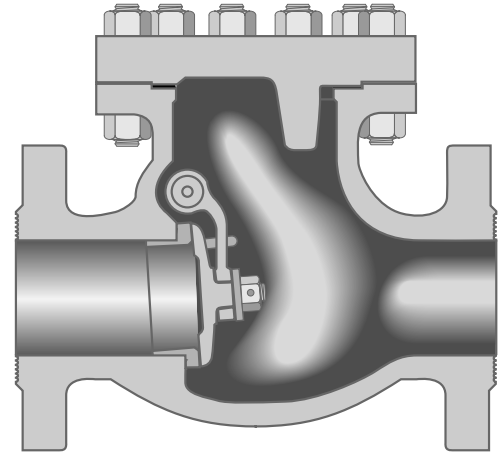
Description	Material
Body	WCB
Cap	WCB
Seat Ring	Hardfaced
Disc	13% CR Overlay
Hinge	WCB
Pins, Hinge	410 SS
Disc Washer	Steel
Cap Screw	A307 Gr. B
Cap Gasket	Ring Joint
Cap Studs	A193 Gr. B7
Cap Nuts	A194 Gr. 2H
I.D. Tags	SS
I.D. Pins	Steel

Figure 175

Flanged
Figure 175^{1/2}
Butt Weld

Size Range:
2 through 12 inches

Pressure Temperature Rating
Carbon Steel
ASTM A216 Grade WCB
1480 psi @ -20°F to 100°F



Industry Standards

Steel Valves	ANSI B16.34
Face-to-Face/End-to-End	ANSI B16.10
Flange Dimensions	ANSI B16.5
Weld End	ANSI B16.25
Testing	API 598
Acceptance	API RP591

Dimensions and Weights

Valve Size	Weight (pounds)		Dimensions (inches)	
	175	175 ^{1/2}	A	B
2	62	44	11.50	6.88
2 ^{1/2}	84	66	13.00	7.88
3	115	88	14.00	9.12
4	192	145	17.00	11.62
6	495	300	22.00	14.25
8	780	620	26.00	15.75
10	1400	1175	31.00	18.12
12	1750	1500	33.00	20.50