

Class 300 • Bolted Cap

Material of Construction

Description	Material
Inlet Body	ASTM A216 WCB
Outlet Body	ASTM A216 WCB
Disc	13% CR Overlay
Pivot Pin	SS
Body Gasket	Graphite/ SS Spiral Wound
Body Studs	ASTM A193 B7
Body Nuts	ASTM A194 2H
Bearing Cap	Carbon Steel
Bearing Cap Gaskets	Soft Steel
Bearing Cap Studs	ASTM A193 B7
Bearing Cap Nuts	ASTM A194 2H
Dowel Pins	Carbon Steel

Figure 323

Flanged

Figure 323^{1/2}

Butt Weld

Size Range:

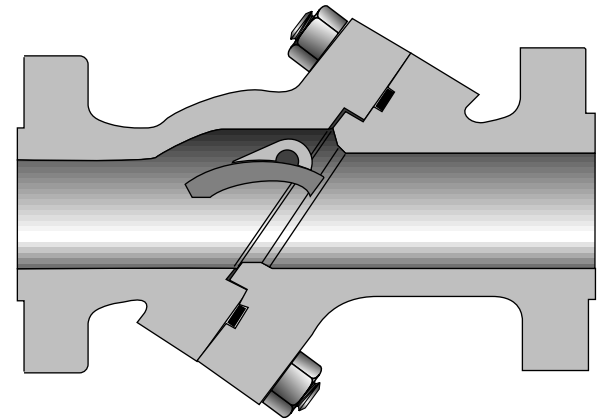
2 through 36 inches

Pressure Temp. Rating

Carbon Steel

ASTM A216 Grade WCB

740 psi @ -20°F to 100°F



Industry Standards

All materials comply with ANSI B16.34

Dimensions and Weights

Valve Size	Weight (pounds)		Dimensions (inches)			
	323	323 ^{1/2}	A	B	C	D
2	57	38	10.50	8.06	–	8.50
2 ^{1/2}	85	58	11.50	9.50	–	9.88
3	90	60	12.50	9.50	–	9.88
4	167	106	14.00	10.75	14.25	–
5	215	166	15.75	12.50	16.38	–
8	457	338	21.00	17.00	22.00	–
10	670	520	24.50	20.25	25.12	–
12	1030	835	28.00	24.00	29.75	–
14	1245	1060	30.00	24.88	30.25	–
16	1695	1270	33.00	27.81	36.00	–
18	2180	1685	36.00	30.75	39.50	–
20	2648	1850	39.00	32.50	40.75	–
24	4070	2790	45.00	37.50	45.25	–
30	6200	4652	54.00	44.50	53.75	–
36	11853	10000	60.00	56.38	68.00	–

