

Class 1500 • Bolted Cap

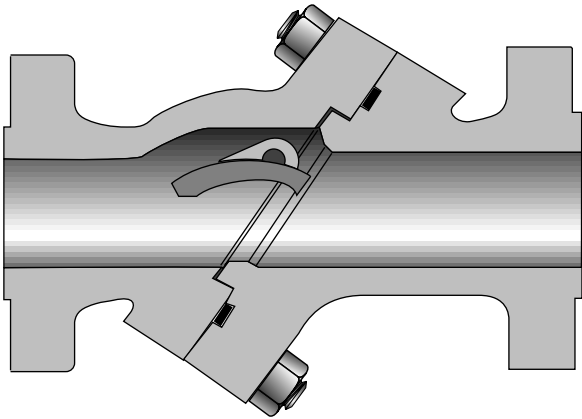


Figure 1523
Flanged
Figure 1523^{1/2}
Butt Weld

Size Range:
2 through 10 inches

Pressure Temp. Rating
Carbon Steel
ASTM A216 Grade WCB
3705 psi @ -20°F to 100°F

Material of Construction

| Description | Material |
|---------------------|---------------------------|
| Inlet Body | ASTM A216 WCB |
| Outlet Body | ASTM A216 WCB |
| Disc | 13% CR Overlay |
| Pivot Pin | SS |
| Body Gasket | Graphite/ SS Spiral Wound |
| Body Studs | ASTM A193 B7 |
| Body Nuts | ASTM A194 2H |
| Bearing Cap | Carbon Steel |
| Bearing Cap Gaskets | Soft Steel |
| Bearing Cap Studs | ASTM A193 B7 |
| Bearing Cap Nuts | ASTM A194 2H |
| Dowel Pins | Carbon Steel |

Industry Standards

All materials comply with ANSI B16.34

Dimensions and Weights

| Valve Size | Weight (pounds) | | Dimensions (inches) | | |
|------------------|-----------------|---------------------|---------------------|-------|-------|
| | 1523 | 1523 ^{1/2} | A | B | C |
| 2 | 178 | 155 | 14.50 | 12.25 | 17.12 |
| 2 ^{1/2} | 220 | 165 | 16.50 | 12.25 | 17.12 |
| 3 | 225 | 180 | 18.50 | 12.25 | 17.12 |
| 4 | 430 | 270 | 21.50 | 14.75 | 21.25 |
| 6 | 960 | 800 | 27.75 | 18.50 | 23.75 |
| 8 | 1700 | 1220 | 32.75 | 22.25 | 30.25 |
| 10 | 2350 | 1875 | 39.00 | 28.94 | 38.25 |

