

Class 150 • Bolted Cap

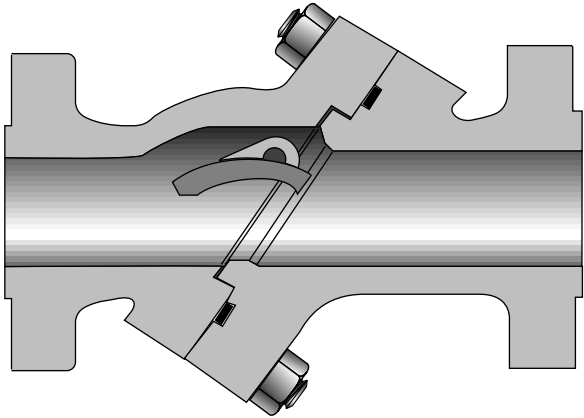


Figure 123
Flanged
Figure 123^{1/2}
Butt Weld

Size Range:
2 through 36 inches

Pressure Temp. Rating
Carbon Steel
ASTM A216 Grade WCB
285 psi @ -20°F to 100°F

Material of Construction

Description	Material
Inlet Body	ASTM A216 WCB
Outlet Body	ASTM A216 WCB
Disc	13% CR Overlay
Pivot Pin	SS
Body Gasket	Graphite/ SS Spiral Wound
Body Studs	ASTM A193 B7
Body Nuts	ASTM A194 2H
Bearing Cap	Carbon Steel
Bearing Cap Gaskets	Soft Steel
Bearing Cap Studs	ASTM A193 B7
Bearing Cap Nuts	ASTM A194 2H
Dowel Pins	Carbon Steel

Industry Standards

All materials comply with ANSI B16.34

Dimensions and Weights

Valve Size	Weight (pounds)		Dimensions (inches)			
	123	123 ^{1/2}	A	B	C	D
2	38	22	8.00	7.31	—	7.94
2 ^{1/2}	51	38	8.50	8.56	—	9.31
3	59	42	9.50	8.56	—	9.31
4	102	75	11.50	9.88	13.25	—
5	139	108	13.00	11.25	15.62	—
8	293	240	19.50	15.88	20.75	—
10	488	400	24.50	18.75	25.00	—
12	690	570	27.50	21.38	27.75	—
14	823	690	31.00	22.44	28.50	—
16	1070	885	30.00	24.94	34.00	—
18	1435	1213	33.00	27.75	35.75	—
20	1825	1760	32.50	30.62	38.88	—
24	2887	2265	38.00	35.82	44.62	—
30	4790	4025	49.50	43.50	53.75	—
36	6795	5755	59.50	50.00	60.25	—

