



CSC-9603-2-T
carbon steel, threaded

CSC-9603-2-W
carbon steel, socket weld

3-piece W-type ball valve

Materials: ASTM A216-WCB (DIN 1.0619) carbon steel

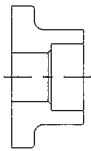
Pressure Temp. Rating: 1/4" to 1" ~ 2000 PSI (PN100)/450°F

1 1/4" to 2" ~ 1500 PSI (PN69)/450°F

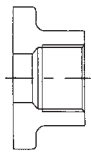
- standard bore
- stainless steel trim
- silicon-free
- high quality investment casting body and caps
- 15% reinforced glass fibrous Teflon seats, in-line repairable
- R-PTFE seats
- adjustable stem packing, blow-out proof stem S/S 316
- 100% air tested under water, 100PSI (6 bars), open/close position
- anti-static device
- ISO-5211 mounting pad
- locking lever
- interchangeable with Worcester series 44 ball valve

OPTIONS:

- graphite seats available



Socket weld ends – to suit pipe with schedule; Imperial metric outside diameters.



Threaded ends – BSP taper, BSP parallel or NPT female

DIMENSIONS

INCH	MM	D	C	E	L	W	H2	TORQUE	WT
1/4	DN8	8	31.7	44	66	118	46	45	0.80
3/8	DN10	10	31.7	44	66	118	46	45	0.78
1/2	DN15	11.1	31.7	44	66	118	46	45	0.67
3/4	DN20	14.2	38.1	52	71	118	48	69	0.90
1	DN25	20.7	44.5	62	96	156	61	105	1.60
1 1/4	DN32	25.44	50.8	68	108	156	66	155	1.80
1 1/2	DN40	31.8	57.2	80	116	188	80	193	2.70
2	DN50	38.1	66.8	90	128	188	84	235	3.60

MATERIALS LIST

NO	PART NAME	MATERIAL	QTY
1	BODY	A216 GR WCB	1
2	CAP	A216 GR WCB	2
3	BALL	SS304/SS316	1
4	S-SEAT	PTFE	2
5	STEM	A276 TP 316	1
6	GLAND RING	A276 TP 316	1
7	PACKING	PTFE	1
8	THRUST WASHER	PTFE	1
9	HANDLE	A570 GR 30	1
10	HANDLE COVER	PLASTIC	1
11	LOCK NUT	CARBON STEEL	1
12	GASKET	PTFE	2
13	BOLT	A193 GR B7	4
14	NUT	A193 GR 2H	4
15	TAB WASHER	A176 TP 304	1
16	STOPPER	A570 GR 30	1
17	NUT	WCB	1
18	SPRING WASHER	WCB	1
	LOCKING DEVICE	AISI304	1

