

CSC-9503-T-DM
stainless steel, threaded

CSC-9503-W-DM
stainless steel, socket weld

3-piece direct mounting ball valve

Threaded ends: NPT

Materials: ASTM A351-CF8M (DIN 1.4408) stainless steel
ASTM A351-CF8 (DIN 1.4308) stainless steel

Pressure Rating: 1000 PSI (PN63)

- full bore
- stainless steel trim
- silicon-free
- high quality investment casting body and caps
- temperature range -60F to 450F
- 15% reinforced glassfibre Teflon seats, in-line repairable
- R-PTFE seats
- adjustable stem packing, blow-out proof stem S/S 316
- 100% tested air under water, 100PSI (6 bars), open/close position
- ISO 5211 top flanges, with ISO 5211 square stem, direct mount

OPTIONS:

- anti-static device
- socket weld end available
- DIN259, DIN2999 threaded ends

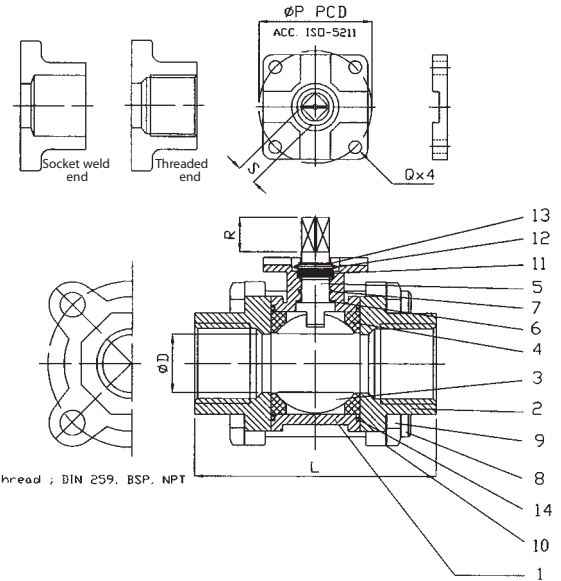
DIMENSIONS

INCH	D	L	R	S	P*	Q*	CV FACTOR	TORQUE N.M.	WT KG
1/4	11.6	63	9	9	36**	M5**	6	2.8	0.43
3/8	12.7	63	9	9	36**	M5**	7	3.7	0.40
1/2	15	68	9	9	36**	M5**	10	3.5	0.60
3/4	20	84	9	9	42†	M5‡	25	7.5	0.85
1	25.4	93	13	11	42†	M5‡	35	9	1.20
1 1/4	32	103	13	11	42†	M5‡	46	16	2.05
1 1/2	38	131	16	14	50§	M6§	80	22	2.80
2	50.8	152	16	14	50§	M6§	110	32	4.35

* ISO 5211 ** F03 † F04 ‡ F05

MATERIALS LIST

NO	PART NAME	MATERIAL	QTY
1	BODY	CF8M	1
2	CAP	CF8M	2
3	BALL	316	1
4	SEAT	REIN TEFLON 15% GFT	2
5	STEM	AISI316	1
6	THRUST WASHER	TEFLON	1
7	O-RING	VITON	1
8	BOLT	AISI304	1
9	HEX NUT	AISI304	1
10	BOLT WASHER	AISI304	1
11	STEM PACKING	AISI304	1
12	DISC SPRING	S/S420	2
13	SNAP RING	SUP3	4
14	BODY SEAL	TEFLON	4



Thread : DIN 259, BSP, NPT

